



HISTORIC PRESERVATION PERMIT

An Historic Preservation Permit for work described below has been issued under the Zoning Ordinance of the City of Tulsa (Section 70.070) to **J Builds, LLC**, for the address of **308 West King Street**, Tulsa, Oklahoma, located in the **Brady Heights Historic Preservation Overlay District**. This Historic Preservation Permit has been granted in accordance with the Board of Adjustment decision (BOA-23440) on September 27, 2022, to reverse the Tulsa Preservation Commission's denial of a portion of the application on August 23, 2022.

Any changes to the Approved Proposal require further review and approval by the Tulsa Preservation Commission prior to work being done. Unapproved changes to the Approved Proposal are a violation of the Zoning Ordinance and may result in revocation of a Building Permit and/or code enforcement.

This Historic Preservation Permit is not a Building Permit for residential or commercial zoning. A copy of this permit and approved project plans should be provided to the City of Tulsa Permit Center for the completion of the process to obtain a Building Permit, if applicable.

APPROVED PROPOSAL

1. Replacement of windows

A handwritten signature in cursive script that reads "Felicity Good".

Felicity Good
Historic Preservation Officer, City of Tulsa

Date issued: September 27, 2022

Expiration: September 28, 2024

Number: HP-0380-2022

85 Aluminum Single Hung Window

Features:

- Aluminum frame and sash components are precision cut and assembled to make joints weather-tight
- Warm-edge insulated glass reduces condensation and improves thermal efficiency
- Sashes interlock for added strength and security
- Positive sash lock provides security and helps keep the frame and sash weather-tight
- Half screen standard
- Vinyl bulb seal spans bottom of operable sash to minimize air and water infiltration
- Continuous extruded nail-fin on all frame sections for fast, easy installation
- Sloped-sill allows for easy water run-off
- Jamb depth: 2.5625"

Custom Options:

- 5/8" or 3/4" flat grids available
- Glass options: **Low-E Glass;** Low-E Glass with Argon Gas; Ultra Low-E Argon
- Custom sizes available
- DP Rating R50 (window size tested 48" x 72")

CITY OF TULSA PRESERVATION COMMISSION

APPROVED DATE: 09-27-22

BY *Selivity Good*

SUCH APPROVED PLANS SHALL NOT BE CHANGED MODIFIED OR ALTERED WITHOUT AUTHORIZATION

Product Performance:

AAMA 101 Results:

Window Size	AAMA Rating (psf)	Air (cfm/ft ²)	Water (psf)
48" x 72"	R40	0.09	6.06
48" x 84"	R40	0.09	6.06
44" x 84"	R45	0.18	7.52
48" x 72" HP	R50	0.09	7.52
CHS Twin 88" x 72" HP	R45	0.18	7.52
CHS Triple 108" x 77" HP	R50	0.09	7.52

Product Dimensions:

Aluminum Wall Thickness: 0.050"
 Glass Thickness: 0.5625"
 Jamb Depth: 2.5625"
 Nail Fin Setback: 1.375"

Rough Opening:

Window Width + 1/2"
 Window Height + 1/2"

Size Restrictions:

	Min:	Max:
Width	11 1/2"	48"
Height	23 1/2"	96"

(Max. United Inches 144")



85 Aluminum Single Hung Window

Egress Formulas:

Egress Width $\geq 20"$ and Egress Height $\geq 24"$ and Egress Area $\geq 5.7 \text{ ft}^2$ required to meet egress.

Egress Width Formula: window width - 1.875"

Egress Height Formula = (window height/2) - 5.250"

Egress Area Formula = (Egress Width x Egress Height)/144

Screen Sizes:

Width: window width - 1.500"

(EW/2) - 1.5625" Twin

(EW/3) - 1.625" Triple

Height: (window height/2) + 0.500"

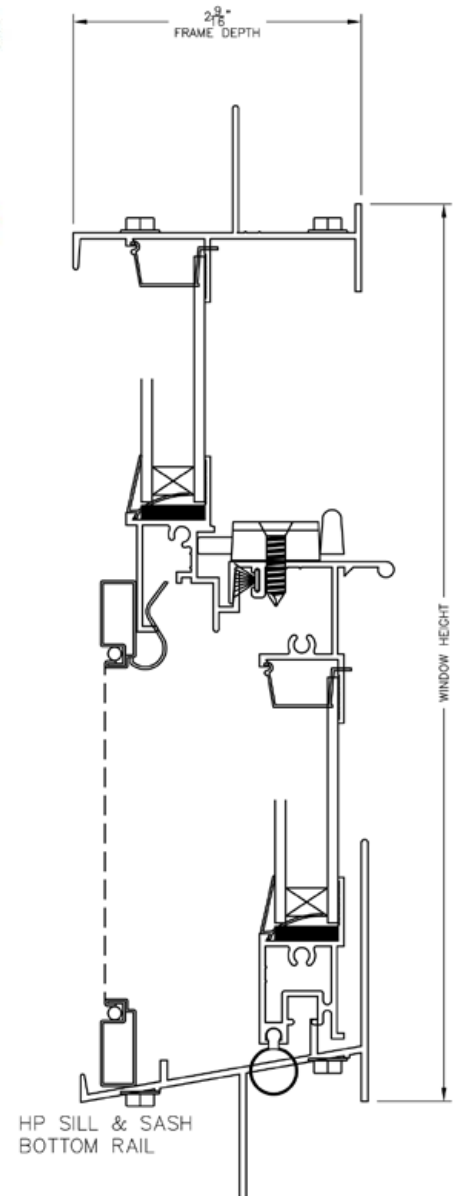
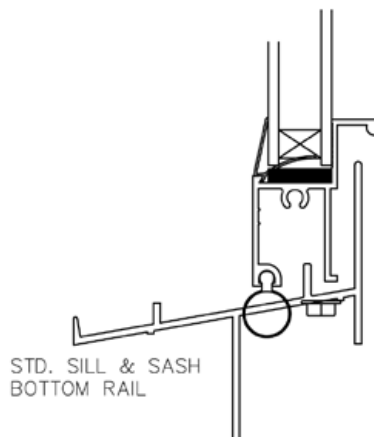
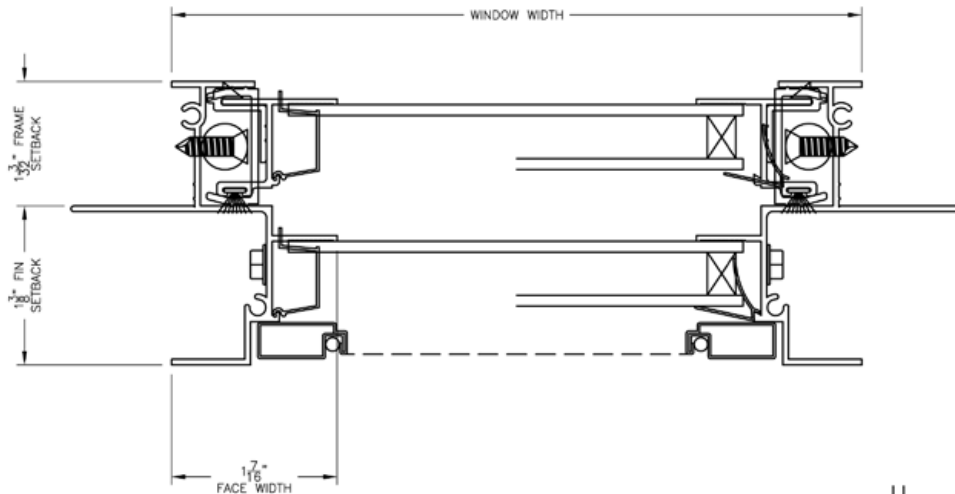
CITY OF TULSA PRESERVATION COMMISSION

APPROVED DATE: 09-27-22

BY *Felicity Good*

SUCH APPROVED PLANS SHALL NOT BE CHANGED
MODIFIED OR ALTERED WITHOUT AUTHORIZATION

Cross Sections:



HP SILL & SASH
BOTTOM RAIL

STD. SILL & SASH
BOTTOM RAIL